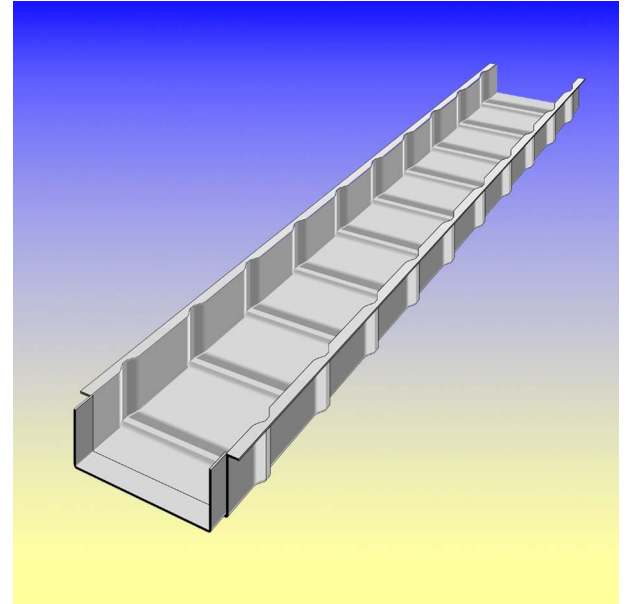


Description / Applications

Range of ground ducts in glass reinforced polyester **BK series**

- Exterior and interior sizes are quite the same
- Quick and easy loading and unloading
- Light material : BK ground ducts do not require any big machines to be installed
- Stiff and self-supported
- Cover fitted into base, fastened with clips or hinges (in option)
- Extremely impact & frost-resistant



Standard resin composition

Technical characteristics on request
R97

Standard Colour

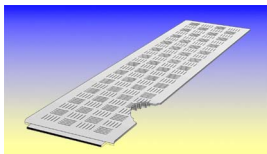
RAL 7032 type

Ref. BK 200140 : 250 x 140 mm

BK 300176 : 350 x 176 mm

BK 400176 : 450 x 176 mm

Accessories / Components



Cover in polyester

width 250

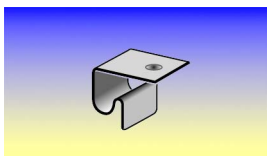
BK DR200

width 350

BK DR300

width 450

BK DR400



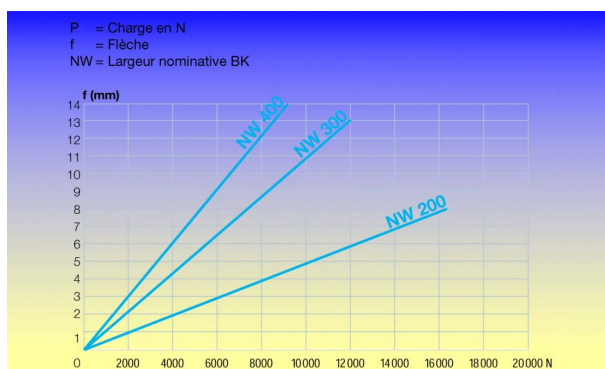
Clip For fixed cover mounting

DF 94/4

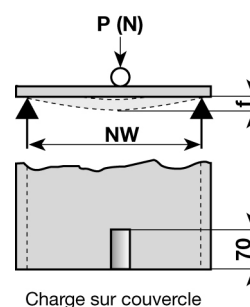
Set of clips and hinge for articulated cover mounting

DF 94/C

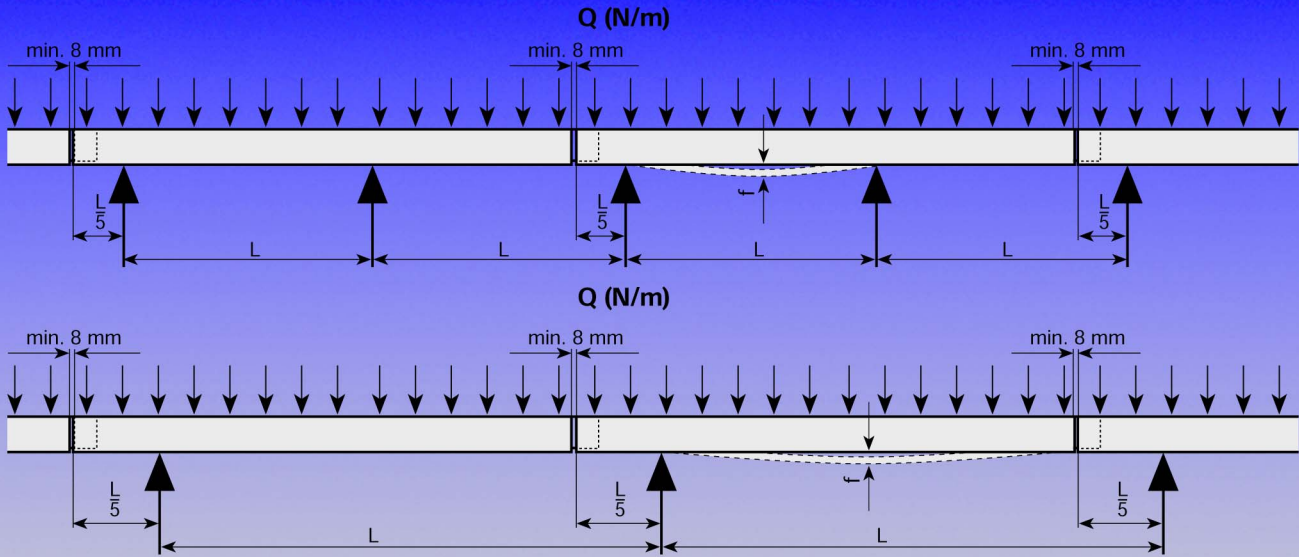
Major characteristics



Load behaviour Of cover BK DR

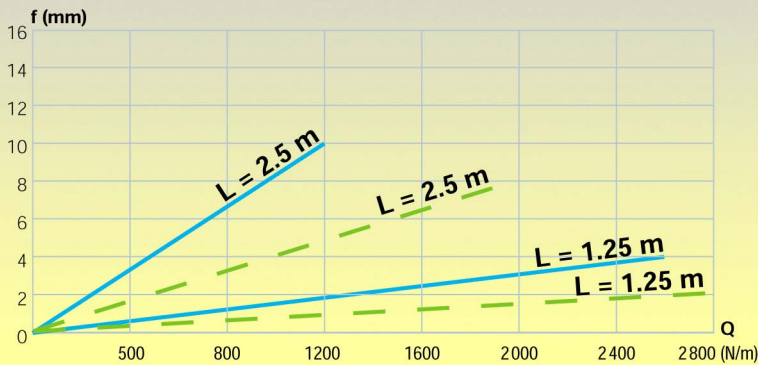


Behaviour when self-supported

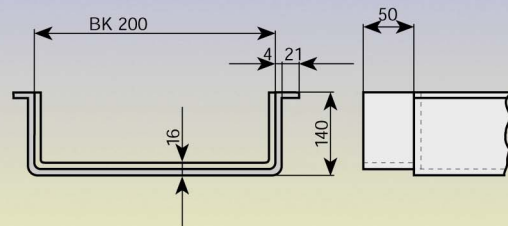


f = Deflection
L = Support distance
Q = Uniformly distributed load

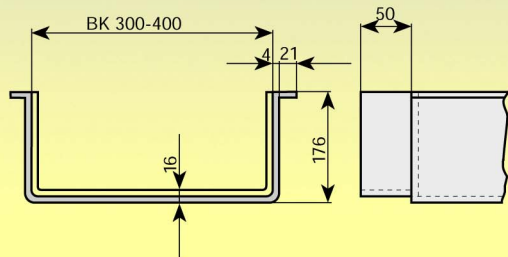
— BK 140 mm
- - - BK 176 mm



BK 140 mm



BK 176 mm



Weight

Base

Thickness 4 mm

BK 200140	3.5 kg/m
BK 300176	4.7 kg/m
BK 400176	5.4 kg/m

Cover

Thickness 4.5 mm

BK DR200	4.1 kg/m
BK DR300	5.9 kg/m
BK DR400	7.6 kg/m